

Umami®

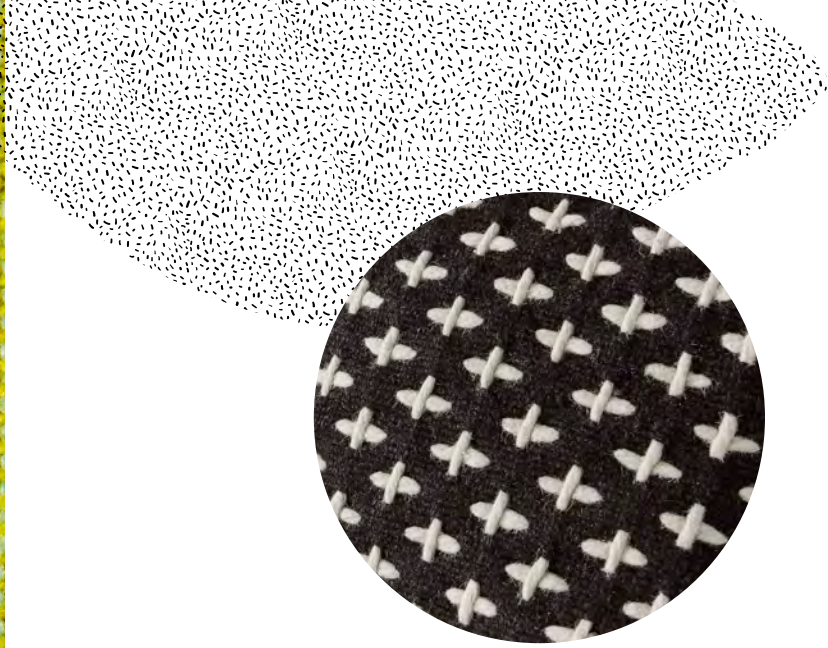
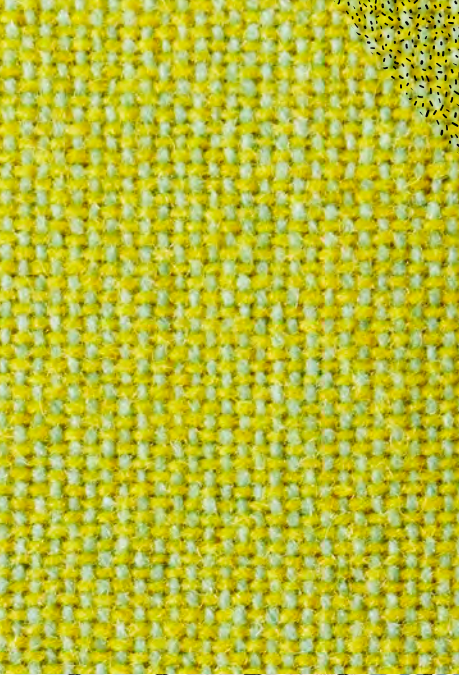
Steekcase®

The background is a solid teal color. On the left side, there are several overlapping, semi-transparent teal shapes: a large circle, a smaller circle, and a curved line. These shapes are layered over a pattern of small, light-colored dots and lines, creating a textured effect. The right side of the image is a solid teal color with white text.

Welcome to Umami

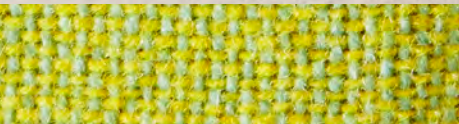
Umami seating, tables and screens are designed to create spaces where people feel an emotional connection. Informal spaces that promote social interactions, stimulate the brand and enhance creativity.

Steelcase®



Products Shown—
*Umami Lounge,
Baseline Table,
Massaud
WorkLounge,
BluDot Mima Pillow*

Steelcase









Products Shown—
*Umami Lounge,
Umami Screen,
Vicarbe Burin Table*

Pages 04/05—
*Umami Lounge,
Umami Screen,
Lagunitas
Personal Table*

Pages 06/07—
*Umami Lounge,
Umami Screen,
Montara650 Table*



Setting the Stage

Creativity flourishes in spaces that let us change our angle of approach, consider the big picture and connect. Rather than work outside its walls, we can now turn the office into a landscape, a pocket park or an inspiring third place that optimizes the inception and flow of ideas.

Steelcase designers share three approaches utilizing the Umami system to create atmospheres that set the stage for invention.

The Pocket Park

The Steelcase Design Team found inspiration in an everyday urban oasis.

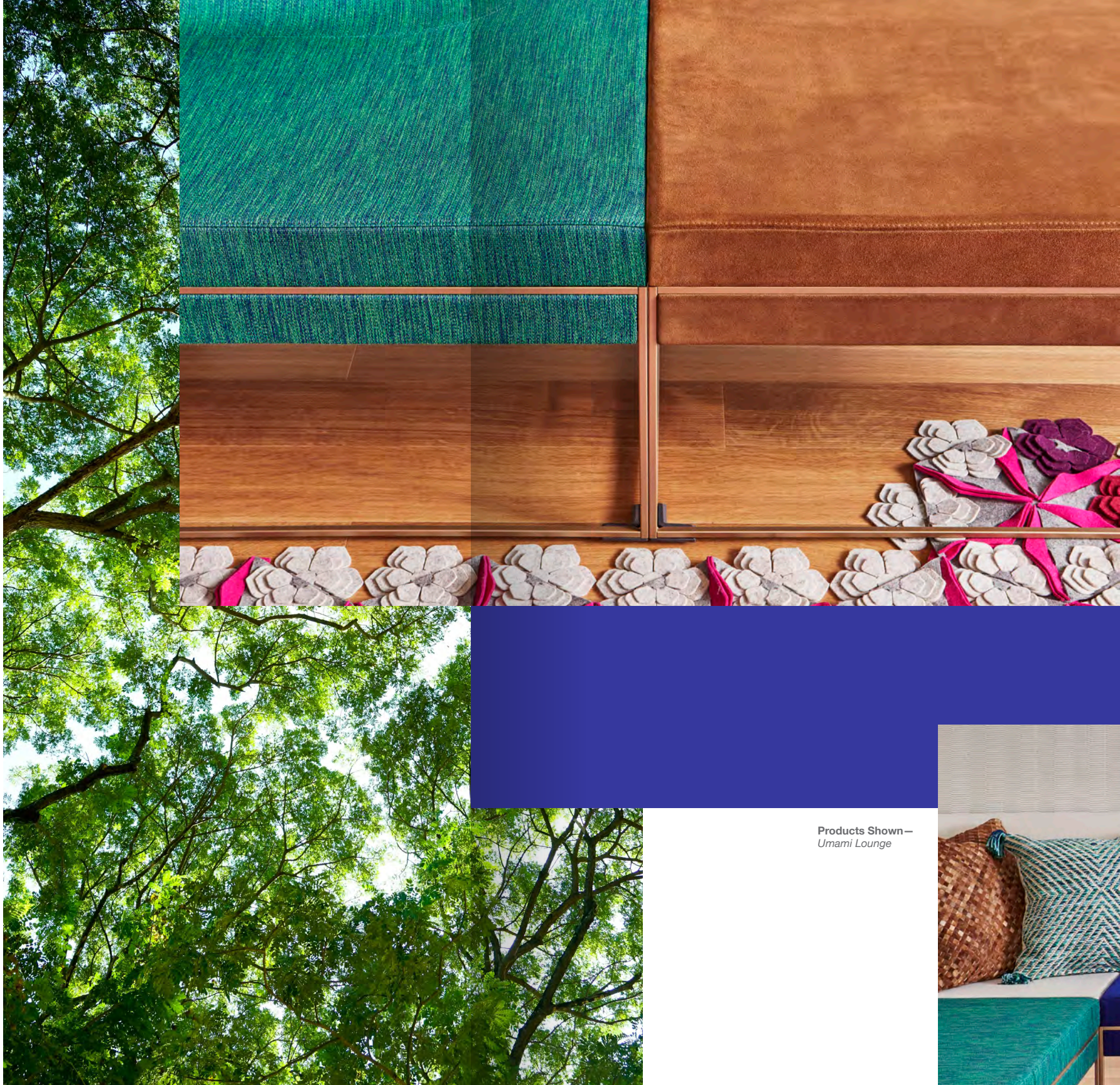
Urbanists have found that by turning unused space into little pockets of green, we can make our city neighborhoods more ecological, boost activity, as well as give residents a place to unwind or connect with neighbors. Adding a pocket park to the office can achieve much the same effect. University studies have shown that in nature our sense of time eases up, our memory improves and we're able to make more creative connections.

To tap into our affinity for the natural world, the Steelcase Design Team turned to compact public commons for inspiration. In their design for a pocket park, the designers thought about the importance of inspiring, relaxed spaces for imagination and communication. They envisioned this inside pocket park as a place where anyone can step away from their desk and get a taste of nature.

Using the Umami system, designers created a neutral, democratic gathering space open to everyone. It's a casual anchor area that invites passersby to pause for conversation and reflection. In the pocket park elements from nature are expressed in shape, color and texture. "We wanted to highlight raw earth materials wherever possible," Steelcase team members say.



Products Shown—
Umami Lounge and
Standard Screens,
Baseline Table



Products Shown—
Umami Lounge





Products Shown—
Umami Lounge,
Materials Palette

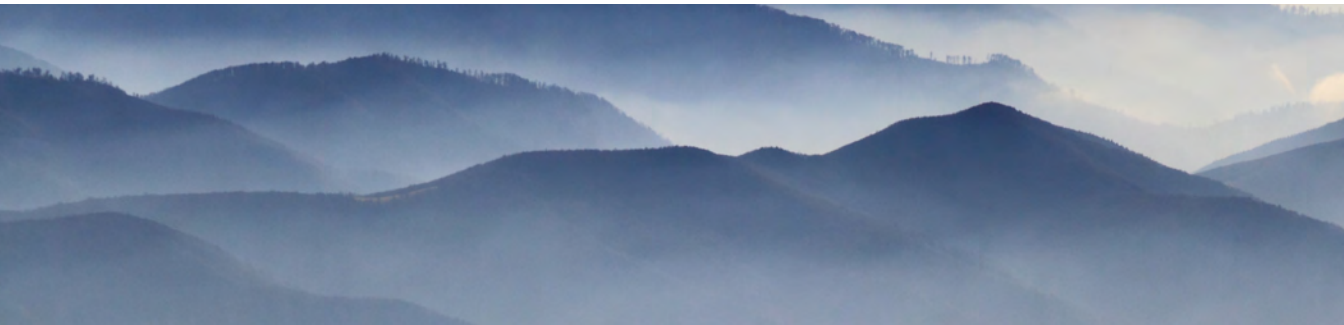
The floral pattern rug, raw wood table with matte brass legs and suede-like fabric mimic the color and feel of the outdoors. Variations in the upholstered areas, mohair vs. subtle stripe, emphasize the playful aspect of the space. The shape of the lounge pieces themselves mimic a rocky coast.

Whatever the size of the gathering, the pocket park promotes informal information sharing. It relaxes the atmosphere just enough to change the conversation.

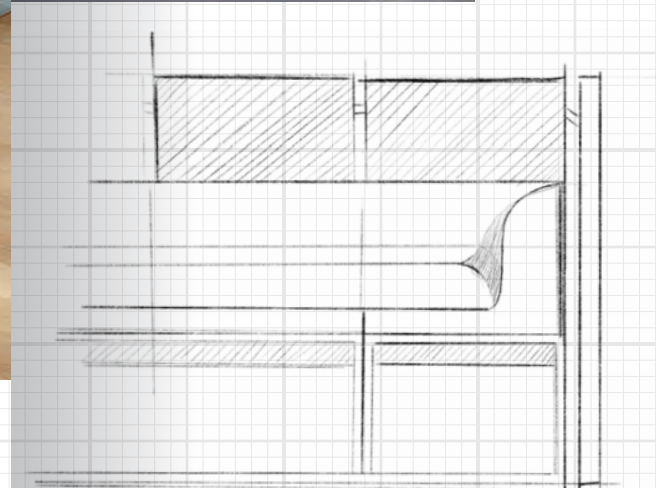
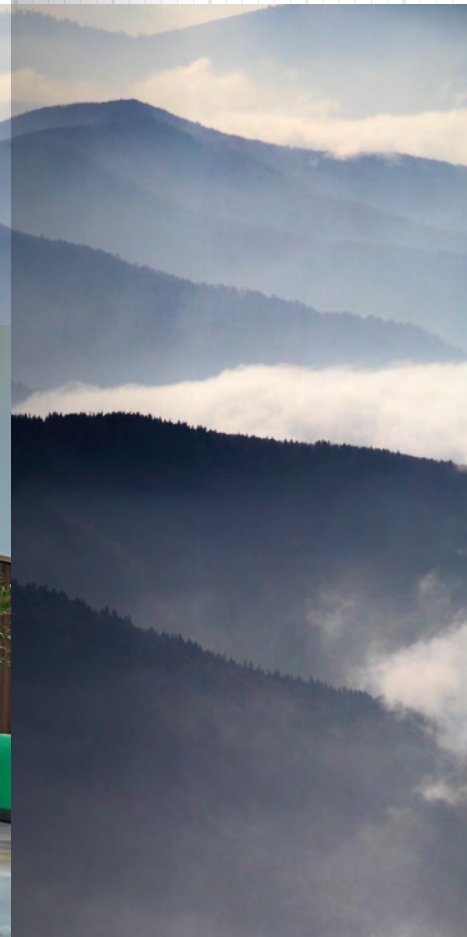
“It’s important to provide for areas where people can make social connections and where they feel like they’re outside,” say our designers, and “It allows them to reset the process.”

Low screen height at the corner of the seating area, provide some visual privacy and encourage conversations. The pocket park can be applied as a wired touchdown space for visitors in the lobby or as a huddle space adjacent to the workplace cafe.





Products Shown—
Umami Lounge,
Umami Platform,
Umami Round Table

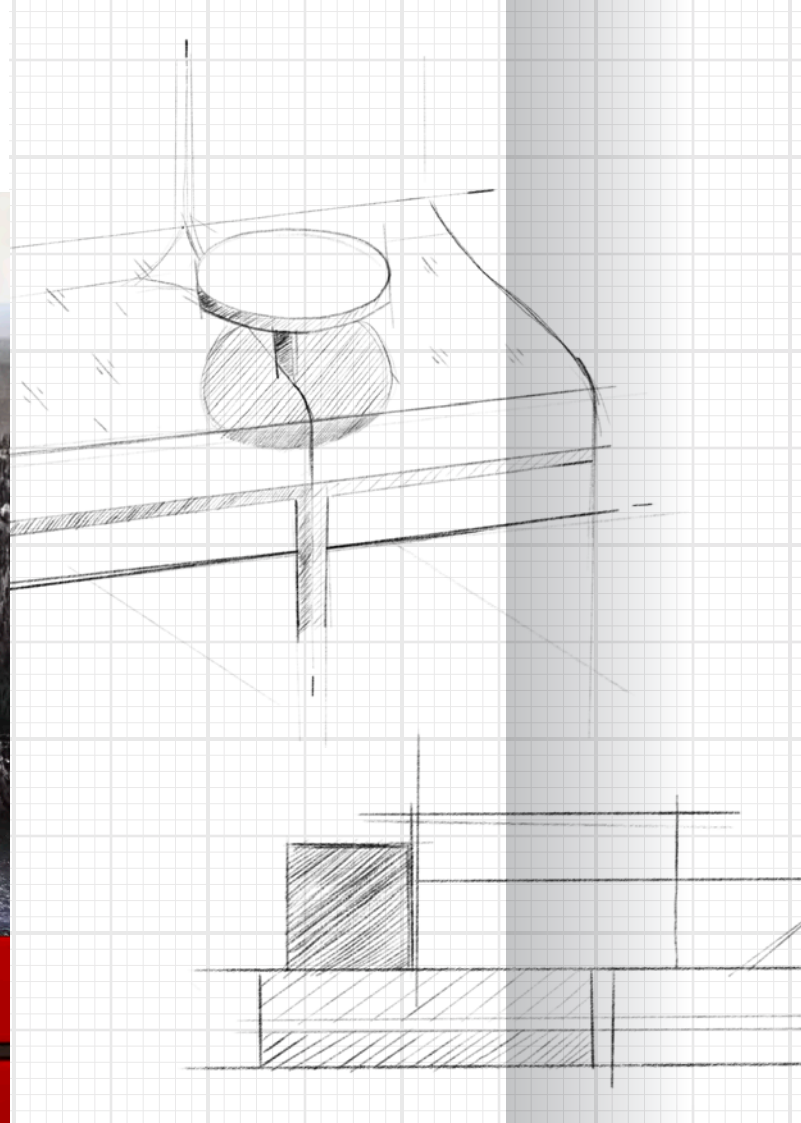


Blended Landscapes

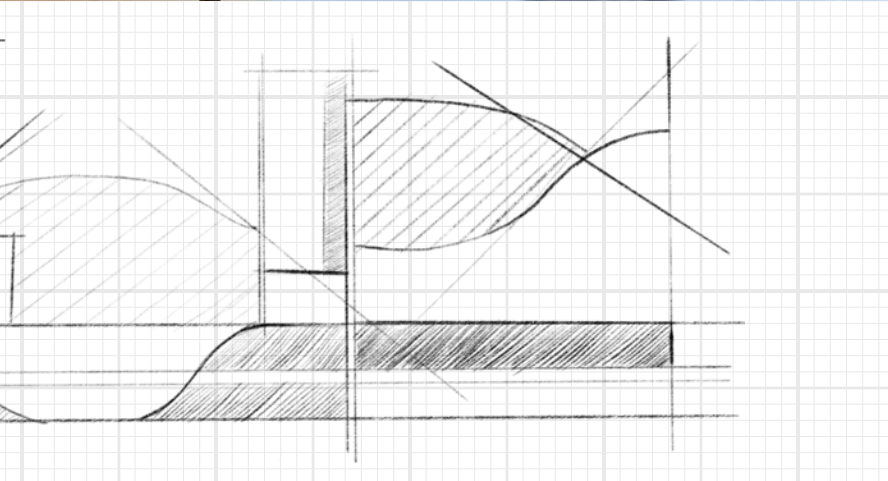
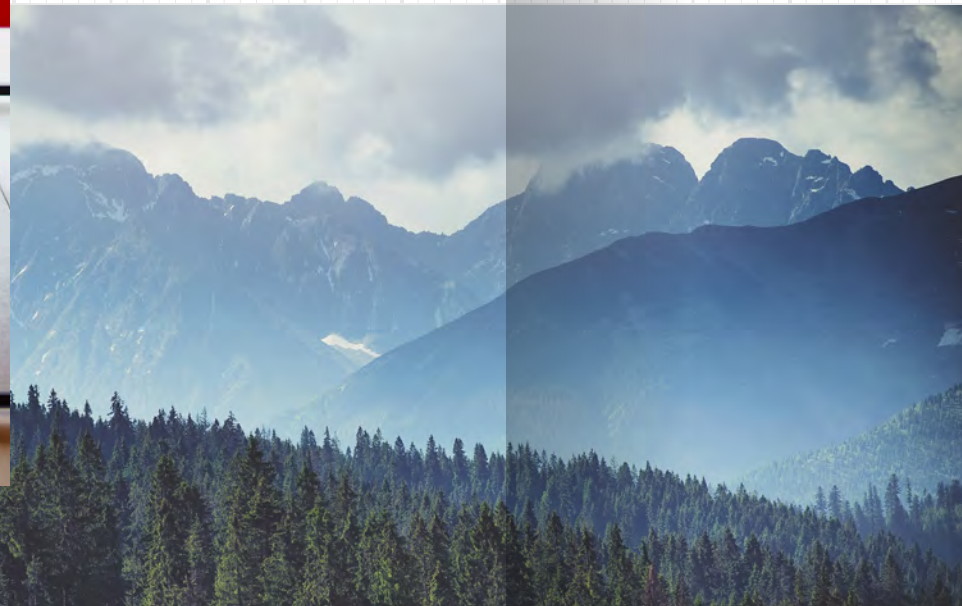
Once a patchwork of departments, the new office requires open, social spaces that allow creative experiences to flow.

Work no longer happens solely at desks or in meeting rooms. Conversations don't just take place at water coolers. Today's workplaces must be an ecosystem of spaces that promote interaction, conversation and collaboration. In this Umami setting, the Steelcase Design Team drew inspiration from natural landscapes. The lounge, with its natural undulating lines, invited comparison to a mountain range for the team. The designers gave the setting a graphic edge by printing black and white mountain photography across its fabric—a nod to the Alps near the design studio. As one design team member puts it, "These shapes from nature communicate with us on an unconscious level, tapping into our affinity for the geometries found in the wild."

Umami



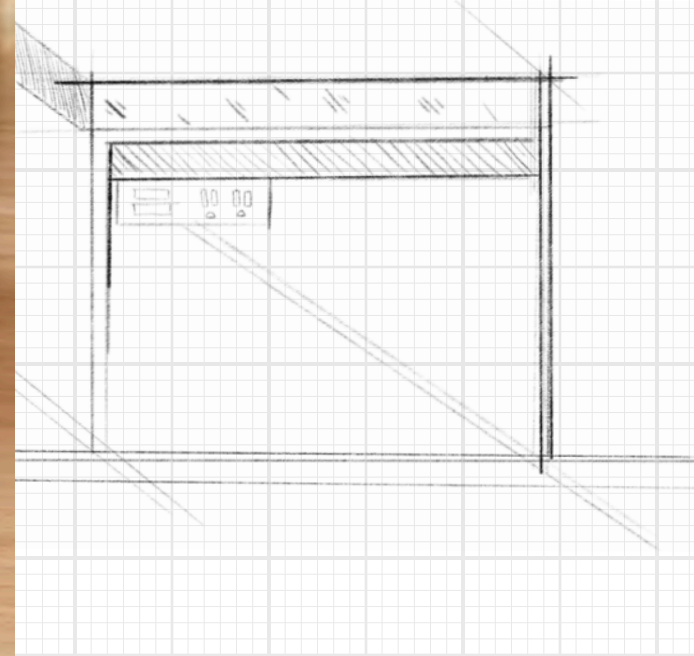
Products Shown—
Umami Lounge



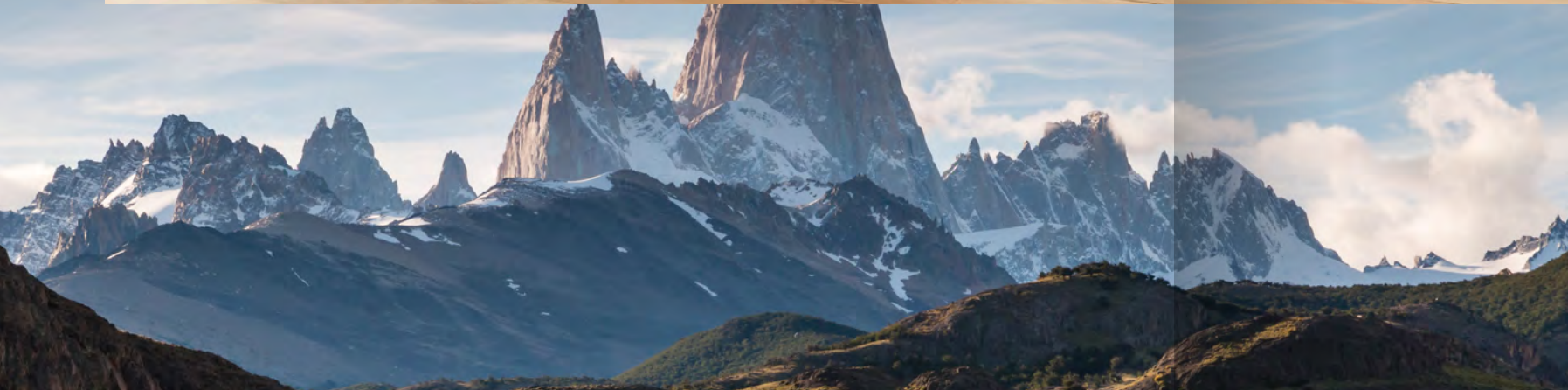
The open modular system, like a palette of natural elements, allows many possibilities and applications, each of which can be further dialed in with color and texture to create a unique experience. As Steelcase Design member Pascal Hien says, “It almost works like LEGO. It’s easy and really fun for planners to create different kinds of custom landscapes within a lounge environment. This system gives a happy, fresh look and feel to an open space. It doesn’t look corporate but it’s still a work tool.”



Products Shown—
Umami Lounge,
Umami Platform,
Umami Round Table



Here's a space that can't be defined by just one task. The landscape we see here is all about blending the ways we work, and allowing those various work modes (heads-down work, face-to-face meeting or quick sharing of ideas) to happen in one space. Designers picture this landscape configuration as a space designed to bring people together and build a sense of community.



Angles of Approach

Looking for that big idea? Try taking a break from your desk.

If you've ever needed to get out of your home or office to work, you've appreciated the appeal of a "third place." The pull of the third place is very powerful and it's becoming an essential facet of the workplace itself.

The Steelcase Design Team envisioned the cove seen below as a less formal work environment, a place where workers can shift their angle of approach in order to unlock creative solutions. "If you want to think differently, you need to think about where you're working," they say. Workstations are well suited for heads-down work, while creative thinking and collaboration can benefit from orientating ourselves differently.

Products Shown—
Umami Lounge,
Umami Screen,
Lagunitas Table

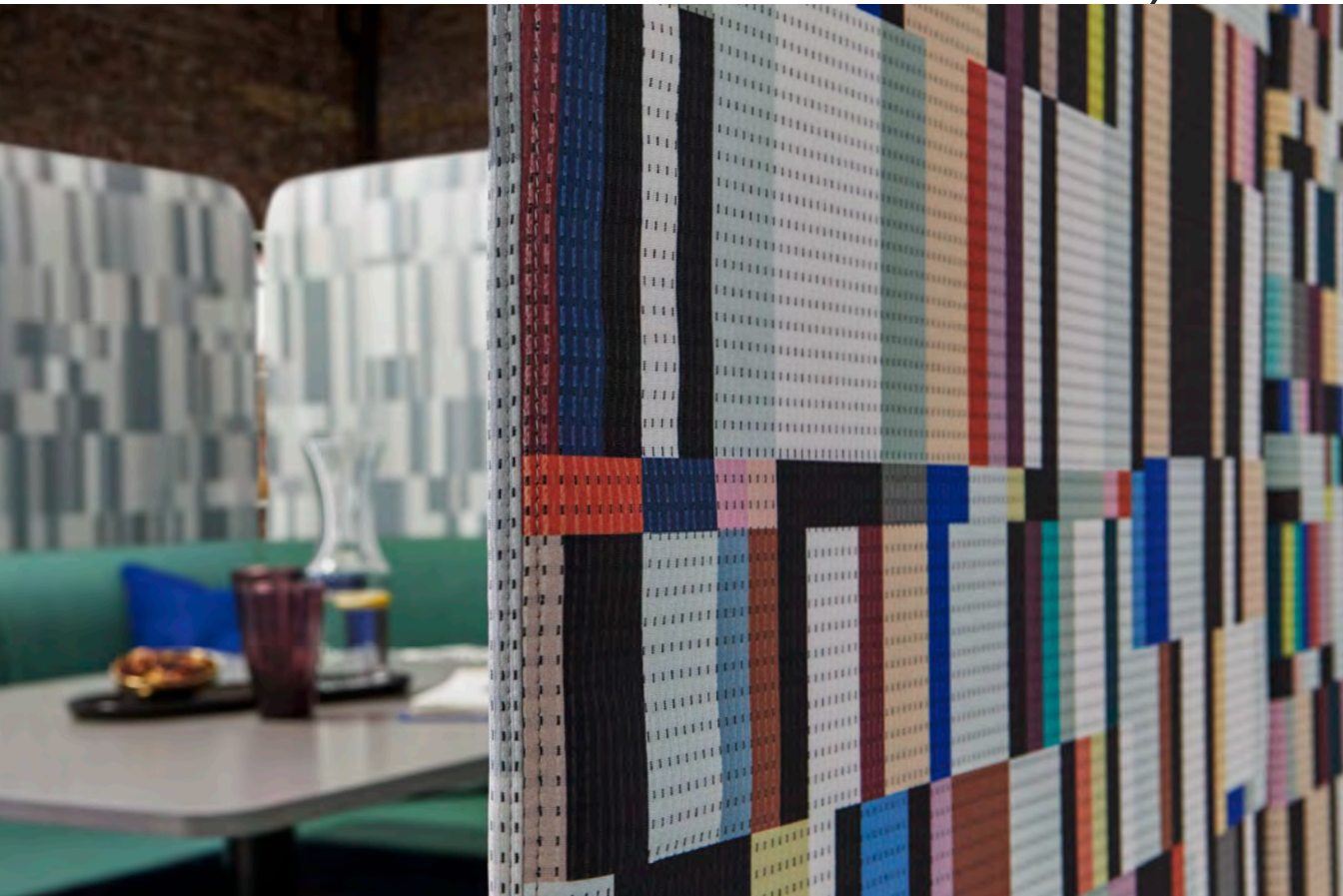
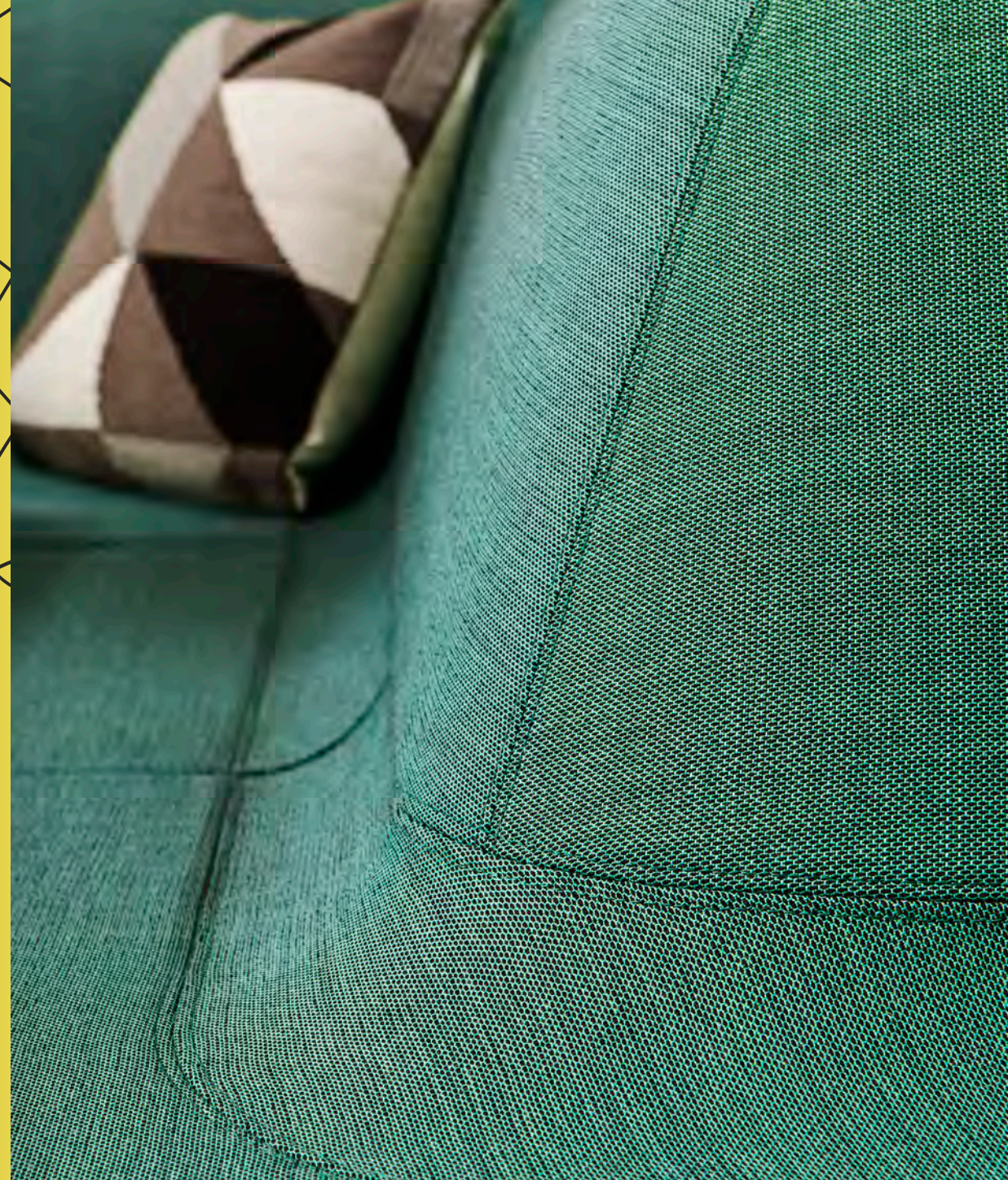
Products Shown—
Umami Lounge,
Umami Screen,
Lagunitas Table,
B-Free Cube



Umami

Research shows that movement and change in posture can promote creative thinking. The cove provides workers with a space where they are able to adjust their approach without leaving the building. It's intended as a casual environment where individuals can vary their thought process or small teams can work together without disappearing completely in a conference room.

The cove lives between various dedicated and open workspace studios where creatives from different disciplines can come together and have a conversation. The higher screens chosen by the team are intended to create a sense of intimacy and privacy for one-on-one meetings or quick chats. "You don't reserve it, you just grab it on the fly and let the vibe of the space quickstart ideas," the Steelcase designers say. Here, a fashion designer and a pair of code developers could brainstorm a new app or interactive event. Or, they each could pop in with a laptop or pen and paper for some heads-down time.



Products Shown—
Umami Lounge,
Umami Screen,
Lagunitas Table

Lounge Seating

Single Lounge Dimensions: 30"d x 30"w x 31"h



Corner Single



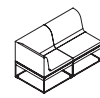
Left Hand Arm Double



Left Hand Arm Single



Left Hand End Cap Single



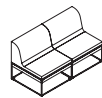
Right Hand Arm Double



Right Hand



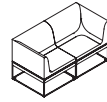
Right Hand End Arm Single



Straight Double Cap Single



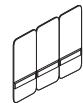
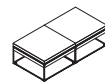
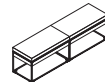
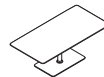
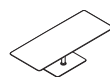
Straight Single



Two Arm Double



Two Arm Single

ScreensSpanner
90"w x 48"hSpanner
90"w x 60"hSpanner
105"w x 48"hSpanner
108"w x 60"hFabric
30"w x 60"hFabric
15"w x 48"hFabric
30"w x 48"h**Platforms**Single Platform Large
30"d x 30"w x 16.5"hSingle Platform Small
15"d x 30"w x 16.5"hDouble Platform Large
30"d x 60"w x 16.5"hDouble Platform Small
15"d x 60"w x 16.5"h**Tables**Work Table
36"d x 40"w x 26"hWork Table
46"d x 48"w x 26"hWork Table
36"d x 57"w x 26"hWork Table
24"d x 30"w x 26"hWork Table
24"d x 36"w x 26"hPersonal Table
13"d x 30"w x 26"h

Pill Table



Round Table

Pages 02-03

Umami Lounge

Kvadrat Gravel 149, Designtex Bute Tweed 3804, Lemon Lime 505. Base: Perfect Match Paint 4Dg8. Platform: Custom Dark Concrete

Baseline Table

Top: Anodized Copper, Base: Matte Copper

Massaud Worklounge

Caviar Fusion Dtex Bute Storm Grey 801. Base: Graphite Matte

Bludot Mima Throw Pillow

Pages 04-05

Umami Lounge

Lounge A: Gabriel Go Uni 64183.

Screen Inside: Gabriel Go Uni 64183. Screen Outside: Steelcut Trio by Kvadrat 465906. Base: Textured Dark Bronze 7278.

Lounge B: Gabriel Atlantic 64116.

Screen Inside: Gabriel Atlantic 64116

Screen Outside: Steelcut Trio by Kvadrat 46590. Base: Textured Dark Bronze 7278.

Lounge C: Gabriel Atlantic 64116

Screen Inside: Gabriel Atlantic 64116. Screen Outside: Steelcut Trio by Kvadrat 465906. Base: Textured Dark Bronze 7278.

Pages 06-07

Umami Lounge

Lounge: Kvadrat Balder 3 982. Frame: Burnished Bronze. Screen: Kvadrat Tokyo 112.

Montara650 Table

Oak Light VP01

Pages 08-09

Umami Lounge

Lounge: Kvadrat - Molly 2 - 154. Frame: Merle. Screens: Kvadrat - Divina Md - 293. Platform: Black Oak

Viccarbe Burin Table

Finish: Bronze

Pages 12-17

Umami Lounge

Kvadrat Balder 2 862. Designtex Reppweave, 3747-102. Kvadrat Haakon 2 1350. Platform: Customize Stain: To Match Quarter Cut Grey Ash V2aa. Base: 4B22 Matte Brass. Screens: Alacantara, Ur Too2, Silica.

Baseline Table

Top: Custom Wood. Base: 42Bb Matte Brass

Pages 18-23

Umami Lounge

Kvadrat Divina 3, 562. Printed Image On Designtex Rocket. Base: Night Bronze Lux Paint

Round Table

Night Bronze Upright. Matte Brass Lux Paint Tabletop

Umami Side Table

Black Marble. Base In Night Bronze Lux Paint.

Pages 24-29

Umami Lounge

Gabriel Criss Cross 4601. Bute Braemar 3802-402 Navy.

Frame: Lux Burnished Bronze 4B23. Platform: New Natural Oak Veneer. Frame: Lux Burnished Bronze 4B23. Screens Outside:

Designtex Pixel Color Bar 3826-901. Inside: Designtex Pixel

Color Bar 3826-901 In Custom Calm Neutral Super Light.

Umami Round Table

Top: Caesarstone 4003 Sleek Concrete. Frame: Burnished

Bronze 4B23.

Lagunitas Table

Top: Caesarstone 4003 Sleek Concrete. Base: Black Gloss

B-Free Small Cube

Coda 2 By Kvadrat 410

**Some custom or COM finishes may only be available as a special or may not be available at all pending testing rules and results.*

Learn More

To find out more about Umami, visit us at:
steelcase.com/umami

Connect with us:

 [instagram.com/steelcase](https://www.instagram.com/steelcase)

 [pinterest.com/steelcase](https://www.pinterest.com/steelcase)

 [facebook.com/steelcase](https://www.facebook.com/steelcase)

 twitter.com/steelcase

 [youtube.com/steelcase](https://www.youtube.com/steelcase)

#18-0005185 ©2018 Steelcase Inc.
All rights reserved.

Trademarks contained herein are the property
of Steelcase Inc. or of their respective owners.

